

## 2. Población

### 2.1. Distribución y crecimiento de la población

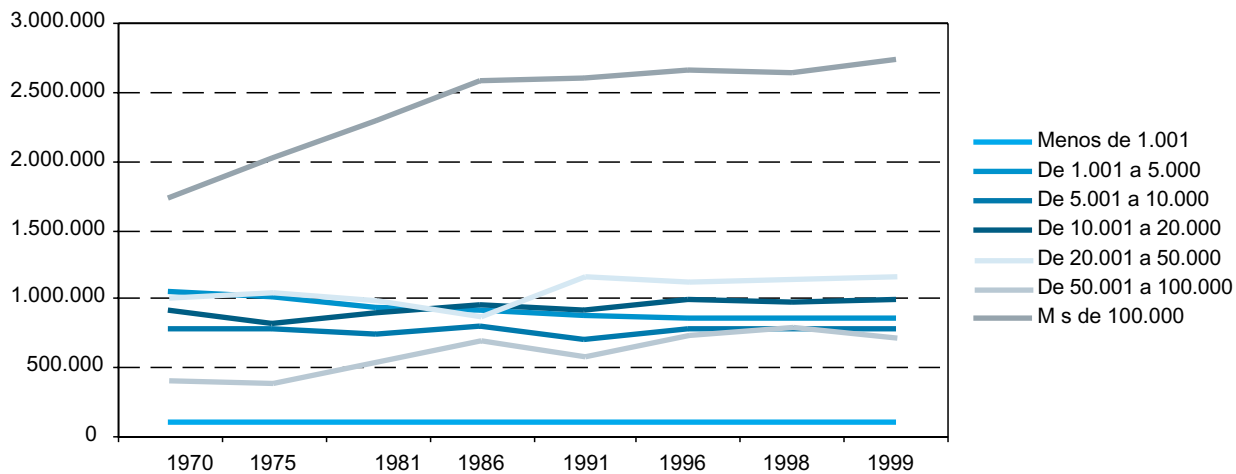
#### 2.1.1. Evolución de la población de derecho según sexo por provincias

|                  | 1930              | 1940              | 1950              | 1960              | 1970              | 1975              | 1981              | 1986              | 1991              | 1996              | 1998              | 1999              |
|------------------|-------------------|-------------------|-------------------|-------------------|-------------------|-------------------|-------------------|-------------------|-------------------|-------------------|-------------------|-------------------|
| <b>Andalucía</b> |                   |                   |                   |                   |                   |                   |                   |                   |                   |                   |                   |                   |
| Hombres          | 2.304.327         | 2.563.962         | 2.740.467         | 2.907.532         | 2.941.485         | 3.011.300         | 3.170.456         | 3.347.032         | 3.416.291         | 3.559.436         | 3.558.950         | 3.592.680         |
| Mujeres          | 2.322.821         | 2.690.158         | 2.906.777         | 3.032.515         | 3.049.591         | 3.122.116         | 3.270.529         | 3.442.740         | 3.524.231         | 3.675.437         | 3.677.509         | 3.712.437         |
| <b>Total</b>     | <b>4.627.148</b>  | <b>5.254.120</b>  | <b>5.647.244</b>  | <b>5.940.047</b>  | <b>5.991.076</b>  | <b>6.133.416</b>  | <b>6.440.985</b>  | <b>6.789.772</b>  | <b>6.940.522</b>  | <b>7.234.873</b>  | <b>7.236.459</b>  | <b>7.305.117</b>  |
| <b>Almería</b>   |                   |                   |                   |                   |                   |                   |                   |                   |                   |                   |                   |                   |
| Hombres          | 175.992           | 179.206           | 174.326           | 180.035           | 185.347           | 191.112           | 202.899           | 218.964           | 225.388           | 250.552           | 252.177           | 256.380           |
| Mujeres          | 184.188           | 194.496           | 187.443           | 189.412           | 192.292           | 197.379           | 207.932           | 223.360           | 230.108           | 251.209           | 253.271           | 256.463           |
| <b>Total</b>     | <b>360.180</b>    | <b>373.702</b>    | <b>361.769</b>    | <b>369.447</b>    | <b>377.639</b>    | <b>388.491</b>    | <b>410.831</b>    | <b>442.324</b>    | <b>455.496</b>    | <b>501.761</b>    | <b>505.448</b>    | <b>512.843</b>    |
| <b>Cádiz</b>     |                   |                   |                   |                   |                   |                   |                   |                   |                   |                   |                   |                   |
| Hombres          | 255.827           | 290.872           | 339.185           | 400.726           | 435.912           | 463.891           | 491.545           | 519.604           | 535.859           | 548.263           | 549.120           | 555.684           |
| Mujeres          | 255.764           | 299.339           | 354.082           | 411.954           | 442.690           | 471.839           | 496.843           | 524.889           | 542.545           | 557.499           | 558.364           | 564.118           |
| <b>Total</b>     | <b>511.591</b>    | <b>590.211</b>    | <b>693.267</b>    | <b>812.680</b>    | <b>878.602</b>    | <b>935.730</b>    | <b>988.388</b>    | <b>1.044.493</b>  | <b>1.078.404</b>  | <b>1.105.762</b>  | <b>1.107.484</b>  | <b>1.119.802</b>  |
| <b>Córdoba</b>   |                   |                   |                   |                   |                   |                   |                   |                   |                   |                   |                   |                   |
| Hombres          | 334.829           | 369.672           | 383.117           | 392.133           | 356.706           | 349.339           | 352.094           | 365.751           | 368.751           | 372.249           | 375.244           | 376.237           |
| Mujeres          | 332.445           | 391.572           | 407.125           | 411.374           | 374.611           | 368.423           | 368.729           | 381.754           | 385.701           | 389.152           | 391.931           | 392.439           |
| <b>Total</b>     | <b>667.274</b>    | <b>761.244</b>    | <b>790.242</b>    | <b>803.507</b>    | <b>731.317</b>    | <b>717.762</b>    | <b>720.823</b>    | <b>747.505</b>    | <b>754.452</b>    | <b>761.401</b>    | <b>767.175</b>    | <b>768.676</b>    |
| <b>Granada</b>   |                   |                   |                   |                   |                   |                   |                   |                   |                   |                   |                   |                   |
| Hombres          | 326.254           | 366.089           | 387.962           | 382.269           | 365.272           | 364.981           | 372.459           | 384.971           | 387.553           | 395.509           | 391.867           | 397.751           |
| Mujeres          | 330.142           | 381.292           | 405.376           | 394.843           | 376.387           | 377.989           | 386.159           | 398.294           | 402.962           | 412.544           | 409.310           | 415.310           |
| <b>Total</b>     | <b>656.396</b>    | <b>747.381</b>    | <b>793.338</b>    | <b>777.112</b>    | <b>741.659</b>    | <b>742.970</b>    | <b>758.618</b>    | <b>783.265</b>    | <b>790.515</b>    | <b>808.053</b>    | <b>801.177</b>    | <b>813.061</b>    |
| <b>Huelva</b>    |                   |                   |                   |                   |                   |                   |                   |                   |                   |                   |                   |                   |
| Hombres          | 175.422           | 181.003           | 176.821           | 196.725           | 197.223           | 197.469           | 206.167           | 214.134           | 218.648           | 224.776           | 224.433           | 226.227           |
| Mujeres          | 180.019           | 194.177           | 192.901           | 207.792           | 206.182           | 205.502           | 212.417           | 219.861           | 224.828           | 229.959           | 229.525           | 231.280           |
| <b>Total</b>     | <b>355.441</b>    | <b>375.180</b>    | <b>369.722</b>    | <b>404.517</b>    | <b>403.405</b>    | <b>402.971</b>    | <b>418.584</b>    | <b>433.995</b>    | <b>443.476</b>    | <b>454.735</b>    | <b>453.958</b>    | <b>457.507</b>    |
| <b>Jaén</b>      |                   |                   |                   |                   |                   |                   |                   |                   |                   |                   |                   |                   |
| Hombres          | 338.623           | 374.633           | 382.517           | 368.824           | 328.772           | 320.018           | 315.143           | 319.814           | 314.848           | 319.859           | 319.272           | 321.263           |
| Mujeres          | 335.722           | 386.214           | 398.711           | 378.117           | 339.434           | 331.251           | 324.678           | 327.035           | 322.785           | 328.692           | 326.520           | 328.399           |
| <b>Total</b>     | <b>674.345</b>    | <b>760.847</b>    | <b>781.228</b>    | <b>746.941</b>    | <b>668.206</b>    | <b>651.269</b>    | <b>639.821</b>    | <b>646.849</b>    | <b>637.633</b>    | <b>648.551</b>    | <b>645.792</b>    | <b>649.662</b>    |
| <b>Málaga</b>    |                   |                   |                   |                   |                   |                   |                   |                   |                   |                   |                   |                   |
| Hombres          | 304.718           | 334.639           | 365.948           | 382.725           | 419.793           | 450.557           | 505.426           | 567.436           | 570.326           | 611.750           | 605.927           | 612.914           |
| Mujeres          | 304.895           | 353.554           | 390.135           | 398.965           | 433.786           | 465.136           | 520.183           | 582.998           | 590.517           | 637.540           | 634.653           | 645.170           |
| <b>Total</b>     | <b>609.613</b>    | <b>688.193</b>    | <b>756.083</b>    | <b>781.690</b>    | <b>853.579</b>    | <b>915.693</b>    | <b>1.025.609</b>  | <b>1.150.434</b>  | <b>1.160.843</b>  | <b>1.249.290</b>  | <b>1.240.580</b>  | <b>1.258.084</b>  |
| <b>Sevilla</b>   |                   |                   |                   |                   |                   |                   |                   |                   |                   |                   |                   |                   |
| Hombres          | 392.662           | 467.848           | 530.591           | 604.095           | 652.460           | 673.933           | 724.723           | 756.358           | 794.918           | 836.478           | 840.910           | 846.224           |
| Mujeres          | 399.646           | 489.514           | 571.004           | 640.058           | 684.209           | 704.597           | 753.588           | 784.549           | 824.785           | 868.842           | 873.935           | 879.258           |
| <b>Total</b>     | <b>792.308</b>    | <b>957.362</b>    | <b>1.101.595</b>  | <b>1.244.153</b>  | <b>1.336.669</b>  | <b>1.378.530</b>  | <b>1.478.311</b>  | <b>1.540.907</b>  | <b>1.619.703</b>  | <b>1.705.320</b>  | <b>1.714.845</b>  | <b>1.725.482</b>  |
| <b>España</b>    |                   |                   |                   |                   |                   |                   |                   |                   |                   |                   |                   |                   |
| Hombres          | 11.776.800        | 12.678.601        | 13.561.190        | 15.109.592        | 16.685.869        | 17.658.308        | 18.491.187        | 18.878.119        | 19.036.446        | 19.399.549        | 19.488.465        | 19.670.642        |
| Mujeres          | 12.130.345        | 13.572.587        | 14.611.078        | 15.962.155        | 17.431.754        | 18.353.946        | 19.191.168        | 19.595.299        | 19.835.822        | 20.269.845        | 20.364.186        | 20.531.518        |
| <b>Total</b>     | <b>23.907.145</b> | <b>26.251.188</b> | <b>28.172.268</b> | <b>31.071.747</b> | <b>34.117.623</b> | <b>36.012.254</b> | <b>37.682.355</b> | <b>38.473.418</b> | <b>38.872.268</b> | <b>39.669.394</b> | <b>39.852.651</b> | <b>40.202.160</b> |

FUENTES: INE. Censos de población  
 IEA. Censo de población de Andalucía 1991  
 INE. Padrones municipales de habitantes  
 INE. Revisión del padrón municipal de habitantes

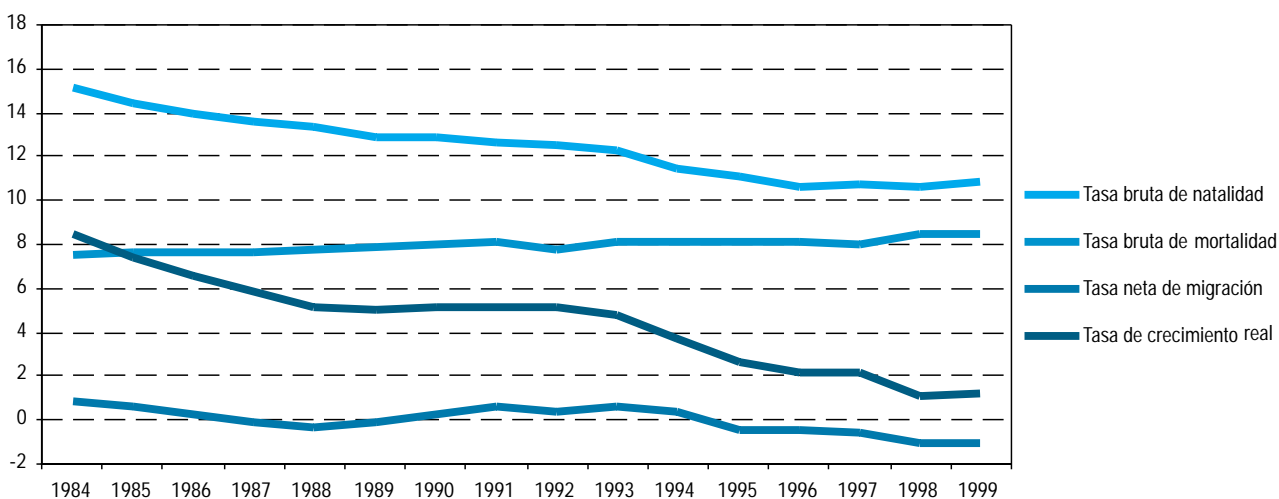
## 2. Población

### 2.1.2.G. Evolución de la población según tamaño de los municipios en Andalucía



FUENTES: INE. Censos de población  
IEA. Censo de población de Andalucía 1991  
INE. Padrones municipales de habitantes  
INE. Revisión del padrón municipal de habitantes

### 2.1.3.G. Evolución de las componentes del crecimiento de la población en Andalucía



FUENTES: IEA. Movimiento natural de la población  
IEA. Estadística de variaciones residenciales

## 2.1.4. Evolución de la población de derecho según sexo por provincias

|                  | 1989              | 1990              | 1992              | 1993              | 1994              | 1995              | 1996              | 1998              | 1999              |
|------------------|-------------------|-------------------|-------------------|-------------------|-------------------|-------------------|-------------------|-------------------|-------------------|
| <b>Andalucía</b> |                   |                   |                   |                   |                   |                   |                   |                   |                   |
| Hombres          | 3.461.497         | 3.501.308         | 3.446.566         | 3.518.267         | 3.571.587         | 3.604.333         | 3.559.436         | 3.558.950         | 3.592.680         |
| Mujeres          | 3.557.788         | 3.598.752         | 3.554.492         | 3.627.090         | 3.678.075         | 3.710.311         | 3.675.437         | 3.677.509         | 3.712.437         |
| <b>Total</b>     | <b>7.019.285</b>  | <b>7.100.060</b>  | <b>7.001.058</b>  | <b>7.145.357</b>  | <b>7.249.662</b>  | <b>7.314.644</b>  | <b>7.234.873</b>  | <b>7.236.459</b>  | <b>7.305.117</b>  |
| <b>Almería</b>   |                   |                   |                   |                   |                   |                   |                   |                   |                   |
| Hombres          | 228.704           | 232.635           | 227.918           | 235.474           | 241.224           | 245.056           | 250.552           | 252.177           | 256.380           |
| Mujeres          | 232.533           | 236.337           | 232.434           | 239.588           | 244.781           | 248.070           | 251.209           | 253.271           | 256.463           |
| <b>Total</b>     | <b>461.237</b>    | <b>468.972</b>    | <b>460.352</b>    | <b>475.062</b>    | <b>486.005</b>    | <b>493.126</b>    | <b>501.761</b>    | <b>505.448</b>    | <b>512.843</b>    |
| <b>Cádiz</b>     |                   |                   |                   |                   |                   |                   |                   |                   |                   |
| Hombres          | 537.986           | 542.710           | 539.942           | 548.508           | 555.609           | 560.462           | 548.263           | 549.120           | 555.684           |
| Mujeres          | 543.153           | 547.918           | 546.737           | 555.750           | 562.528           | 567.160           | 557.499           | 558.364           | 564.118           |
| <b>Total</b>     | <b>1.081.139</b>  | <b>1.090.628</b>  | <b>1.086.679</b>  | <b>1.104.258</b>  | <b>1.118.137</b>  | <b>1.127.622</b>  | <b>1.105.762</b>  | <b>1.107.484</b>  | <b>1.119.802</b>  |
| <b>Córdoba</b>   |                   |                   |                   |                   |                   |                   |                   |                   |                   |
| Hombres          | 374.894           | 376.826           | 371.820           | 377.792           | 381.570           | 383.046           | 372.249           | 375.244           | 376.237           |
| Mujeres          | 390.623           | 392.719           | 388.599           | 394.226           | 397.763           | 399.175           | 389.152           | 391.931           | 392.439           |
| <b>Total</b>     | <b>765.517</b>    | <b>769.545</b>    | <b>760.419</b>    | <b>772.018</b>    | <b>779.333</b>    | <b>782.221</b>    | <b>761.401</b>    | <b>767.175</b>    | <b>768.676</b>    |
| <b>Granada</b>   |                   |                   |                   |                   |                   |                   |                   |                   |                   |
| Hombres          | 395.791           | 400.660           | 392.169           | 400.444           | 408.782           | 412.720           | 395.509           | 391.867           | 397.751           |
| Mujeres          | 410.615           | 415.982           | 407.876           | 416.561           | 424.744           | 429.109           | 412.544           | 409.310           | 415.310           |
| <b>Total</b>     | <b>806.406</b>    | <b>816.642</b>    | <b>800.045</b>    | <b>817.005</b>    | <b>833.526</b>    | <b>841.829</b>    | <b>808.053</b>    | <b>801.177</b>    | <b>813.061</b>    |
| <b>Huelva</b>    |                   |                   |                   |                   |                   |                   |                   |                   |                   |
| Hombres          | 220.771           | 223.005           | 219.746           | 222.539           | 224.897           | 226.952           | 224.776           | 224.433           | 226.227           |
| Mujeres          | 226.223           | 228.517           | 225.838           | 228.219           | 230.098           | 231.722           | 229.959           | 229.525           | 231.280           |
| <b>Total</b>     | <b>446.994</b>    | <b>451.522</b>    | <b>445.584</b>    | <b>450.758</b>    | <b>454.995</b>    | <b>458.674</b>    | <b>454.735</b>    | <b>453.958</b>    | <b>457.507</b>    |
| <b>Jaén</b>      |                   |                   |                   |                   |                   |                   |                   |                   |                   |
| Hombres          | 326.130           | 327.065           | 317.877           | 324.149           | 327.987           | 329.664           | 319.859           | 319.272           | 321.263           |
| Mujeres          | 333.809           | 335.028           | 325.772           | 331.944           | 335.599           | 337.103           | 328.692           | 326.520           | 328.399           |
| <b>Total</b>     | <b>659.939</b>    | <b>662.093</b>    | <b>643.649</b>    | <b>656.093</b>    | <b>663.586</b>    | <b>666.767</b>    | <b>648.551</b>    | <b>645.792</b>    | <b>649.662</b>    |
| <b>Málaga</b>    |                   |                   |                   |                   |                   |                   |                   |                   |                   |
| Hombres          | 594.256           | 604.615           | 574.898           | 585.484           | 595.788           | 601.883           | 611.750           | 605.927           | 612.914           |
| Mujeres          | 609.468           | 619.531           | 595.188           | 606.511           | 616.683           | 623.076           | 637.540           | 634.653           | 645.170           |
| <b>Total</b>     | <b>1.203.724</b>  | <b>1.224.146</b>  | <b>1.170.086</b>  | <b>1.191.995</b>  | <b>1.212.471</b>  | <b>1.224.959</b>  | <b>1.249.290</b>  | <b>1.240.580</b>  | <b>1.258.084</b>  |
| <b>Sevilla</b>   |                   |                   |                   |                   |                   |                   |                   |                   |                   |
| Hombres          | 782.965           | 793.792           | 802.196           | 823.877           | 835.730           | 844.550           | 836.478           | 840.910           | 846.224           |
| Mujeres          | 811.364           | 822.720           | 832.048           | 854.291           | 865.879           | 874.896           | 868.842           | 873.935           | 879.258           |
| <b>Total</b>     | <b>1.594.329</b>  | <b>1.616.512</b>  | <b>1.634.244</b>  | <b>1.678.168</b>  | <b>1.701.609</b>  | <b>1.719.446</b>  | <b>1.705.320</b>  | <b>1.714.845</b>  | <b>1.725.482</b>  |
| <b>España</b>    |                   |                   |                   |                   |                   |                   |                   |                   |                   |
| Hombres          | 19.416.964        | 19.587.393        | 19.171.898        | 19.505.679        | 19.729.854        | 19.846.523        | 19.399.549        | 19.488.465        | 19.670.642        |
| Mujeres          | 20.124.818        | 20.299.747        | 19.965.087        | 20.285.276        | 20.500.486        | 20.613.532        | 20.269.845        | 20.364.186        | 20.531.518        |
| <b>Total</b>     | <b>39.541.782</b> | <b>39.887.140</b> | <b>39.136.985</b> | <b>39.790.955</b> | <b>40.230.340</b> | <b>40.460.055</b> | <b>39.669.394</b> | <b>39.852.651</b> | <b>40.202.160</b> |

FUENTES: INE. Rectificación del padrón municipal de habitantes 1989-1995

INE. Padrón municipal de habitantes 1996

INE. Revisión del padrón municipal de habitantes 1998-1999

## 2. Población

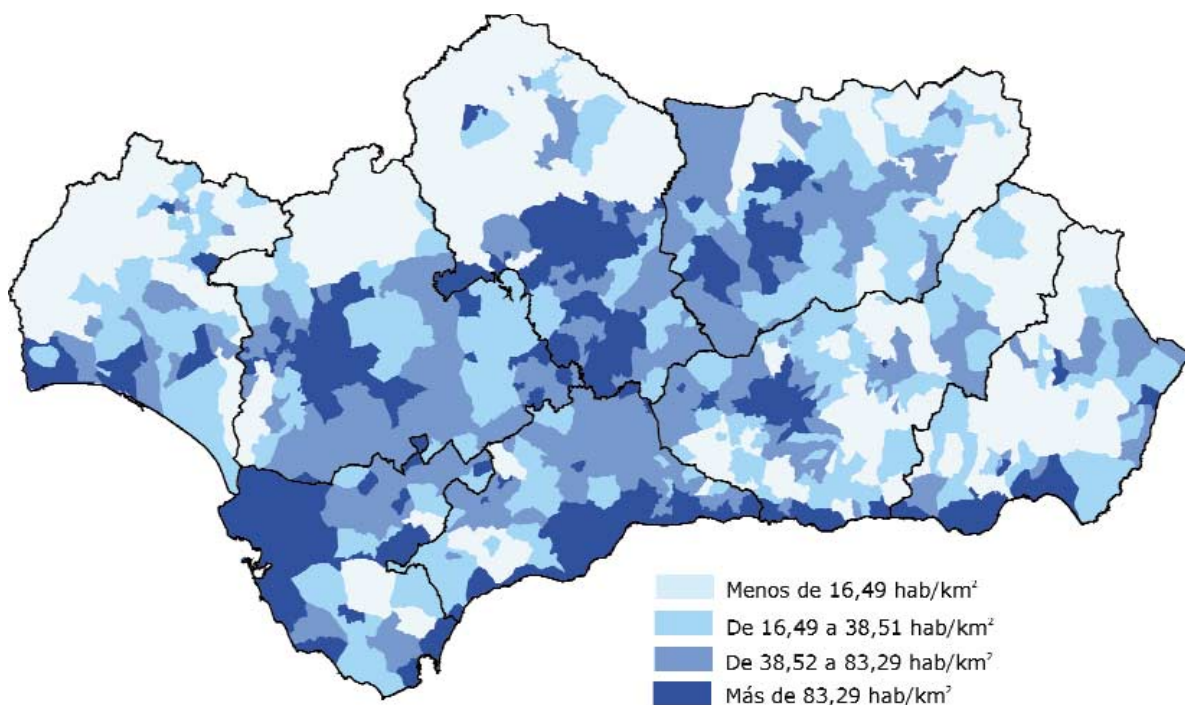
### 2.1.5. Distribución de la población y de los municipios andaluces según la población residente de los mismos por provincias. Año 1999

|                  | Menos de<br>501 hab. | De 501 a<br>1.000 hab. | De 1.001 a<br>2.000 hab. | De 2.001 a<br>3.000 hab. | De 3.001 a<br>5.000 hab. | De 5.001 a<br>10.000 hab. | De 10.001 a<br>20.000 hab. | De 20.001 a<br>50.000 hab. | De 50.001 a<br>100.000 hab. | Más de<br>100.000 hab. | Total      |
|------------------|----------------------|------------------------|--------------------------|--------------------------|--------------------------|---------------------------|----------------------------|----------------------------|-----------------------------|------------------------|------------|
| <b>Andalucía</b> |                      |                        |                          |                          |                          |                           |                            |                            |                             |                        |            |
| Habitantes       | 28.791               | 68.989                 | 205.380                  | 232.483                  | 405.327                  | 781.479                   | 978.195                    | 1.159.230                  | 708.072                     | 2.737.171              | 7.305.117  |
| Nº de municipios | 90                   | 95                     | 138                      | 94                       | 106                      | 115                       | 69                         | 40                         | 11                          | 11                     | 769        |
| <b>Almería</b>   |                      |                        |                          |                          |                          |                           |                            |                            |                             |                        |            |
| Habitantes       | 10.590               | 10.974                 | 21.653                   | 27.311                   | 25.138                   | 74.420                    | 58.626                     | 63.619                     | 51.485                      | 169.027                | 512.843    |
| Nº de municipios | 35                   | 16                     | 14                       | 11                       | 7                        | 11                        | 4                          | 2                          | 1                           | 1                      | 102        |
| <b>Cádiz</b>     |                      |                        |                          |                          |                          |                           |                            |                            |                             |                        |            |
| Habitantes       | 447                  | 1.591                  | 7.188                    | 4.732                    | 11.359                   | 73.445                    | 119.165                    | 132.323                    | 341.337                     | 428.215                | 1.119.802  |
| Nº de municipios | 1                    | 2                      | 4                        | 2                        | 3                        | 11                        | 8                          | 5                          | 5                           | 3                      | 44         |
| <b>Córdoba</b>   |                      |                        |                          |                          |                          |                           |                            |                            |                             |                        |            |
| Habitantes       | 1.294                | 4.986                  | 23.470                   | 15.759                   | 65.071                   | 114.504                   | 102.360                    | 129.524                    | -                           | 311.708                | 768.676    |
| Nº de municipios | 3                    | 7                      | 15                       | 6                        | 16                       | 15                        | 7                          | 5                          | -                           | 1                      | 75         |
| <b>Granada</b>   |                      |                        |                          |                          |                          |                           |                            |                            |                             |                        |            |
| Habitantes       | 7.926                | 23.715                 | 59.328                   | 57.927                   | 49.375                   | 124.540                   | 112.190                    | 82.895                     | 50.398                      | 244.767                | 813.061    |
| Nº de municipios | 23                   | 31                     | 44                       | 23                       | 13                       | 19                        | 9                          | 4                          | 1                           | 1                      | 168        |
| <b>Huelva</b>    |                      |                        |                          |                          |                          |                           |                            |                            |                             |                        |            |
| Habitantes       | 3.980                | 7.781                  | 14.900                   | 30.875                   | 39.112                   | 64.598                    | 155.678                    | -                          | -                           | 140.583                | 457.507    |
| Nº de municipios | 13                   | 11                     | 10                       | 13                       | 10                       | 10                        | 11                         | -                          | -                           | 1                      | 79         |
| <b>Jaén</b>      |                      |                        |                          |                          |                          |                           |                            |                            |                             |                        |            |
| Habitantes       | -                    | 9.155                  | 25.447                   | 40.350                   | 66.865                   | 114.968                   | 109.757                    | 115.151                    | 58.722                      | 109.247                | 649.662    |
| Nº de municipios | -                    | 13                     | 17                       | 17                       | 18                       | 17                        | 8                          | 4                          | 1                           | 1                      | 96         |
| <b>Málaga</b>    |                      |                        |                          |                          |                          |                           |                            |                            |                             |                        |            |
| Habitantes       | 4.186                | 7.928                  | 35.501                   | 32.562                   | 64.248                   | 27.931                    | 87.710                     | 311.525                    | 54.796                      | 631.697                | 1.258.084  |
| Nº de municipios | 14                   | 11                     | 23                       | 13                       | 17                       | 4                         | 6                          | 9                          | 1                           | 2                      | 100        |
| <b>Sevilla</b>   |                      |                        |                          |                          |                          |                           |                            |                            |                             |                        |            |
| Habitantes       | 368                  | 2.859                  | 17.893                   | 22.967                   | 84.159                   | 187.073                   | 232.709                    | 324.193                    | 151.334                     | 701.927                | 1.725.482  |
| Nº de municipios | 1                    | 4                      | 11                       | 9                        | 22                       | 28                        | 16                         | 11                         | 2                           | 1                      | 105        |
| <b>España</b>    |                      |                        |                          |                          |                          |                           |                            |                            |                             |                        |            |
| Habitantes       | 788.281              | 803.676                | 1.445.626                | 1.268.643                | 1.868.683                | 3.517.474                 | 4.611.424                  | 5.414.573                  | 4.193.401                   | 16.290.379             | 40.202.160 |
| Nº de municipios | 3.801                | 1.132                  | 1.014                    | 523                      | 484                      | 514                       | 330                        | 185                        | 63                          | 55                     | 8.101      |

FUENTE: INE. Revisión del padrón municipal de habitantes

2.1.6.G. Densidad de población de los municipios andaluces. Año 1999 (hab/km<sup>2</sup>)

---



---

FUENTES: INE. Revisión del padrón municipal de habitantes.  
Consejería de Obras Públicas y Transportes. Instituto de Cartografía de Andalucía